

Installation Instructions of ContiTech Air Springs

1. Step

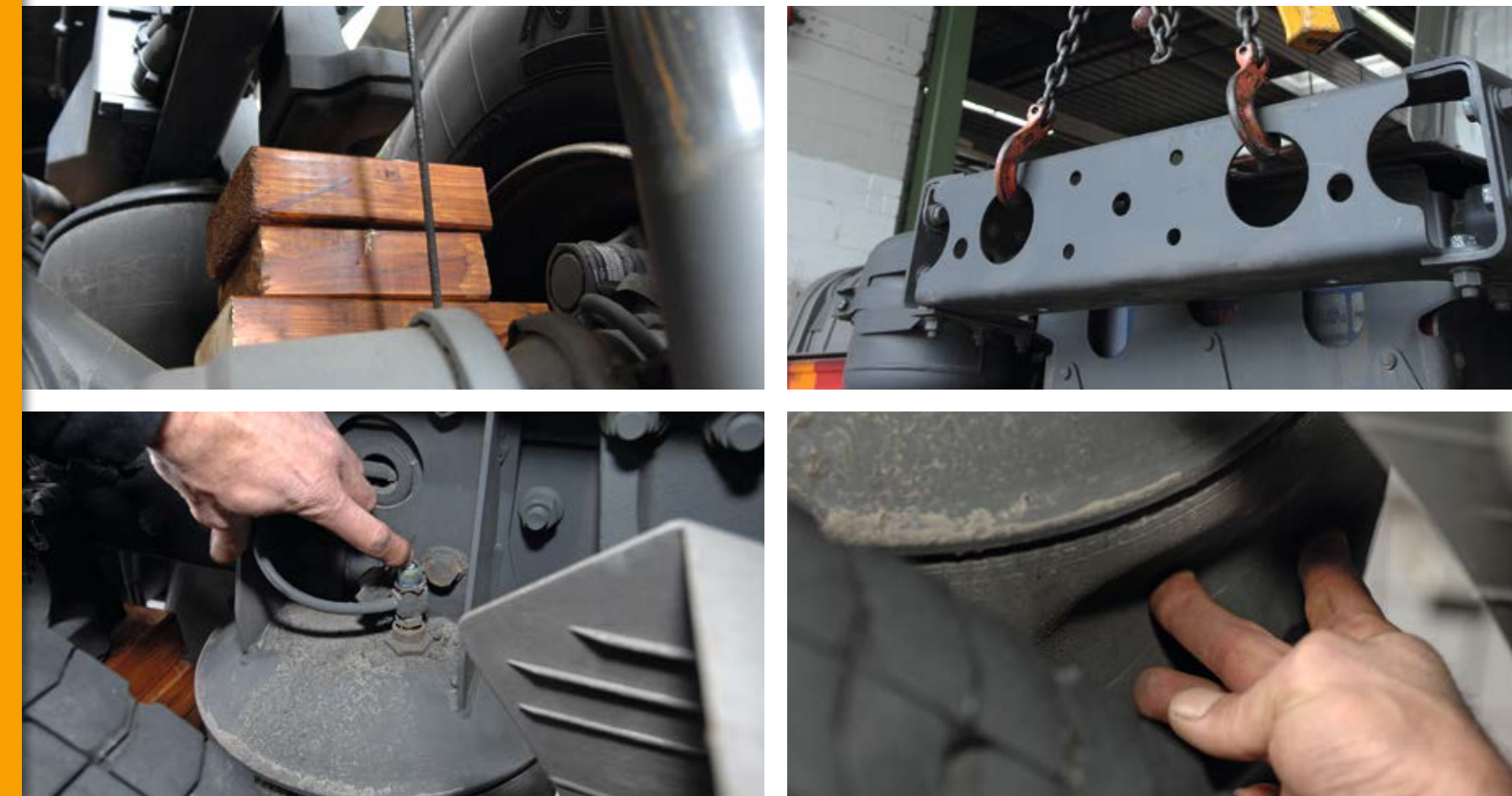
Have your new ContiTech Air Spring System ready



- The best way to change an air spring is to use a complete system and to exchange axle wise.
- Here we show as an example how to exchange an Air Spring System on a truck rear axle.
- Please always refer to the mounting instructions of your vehicle manufacturer.

2.

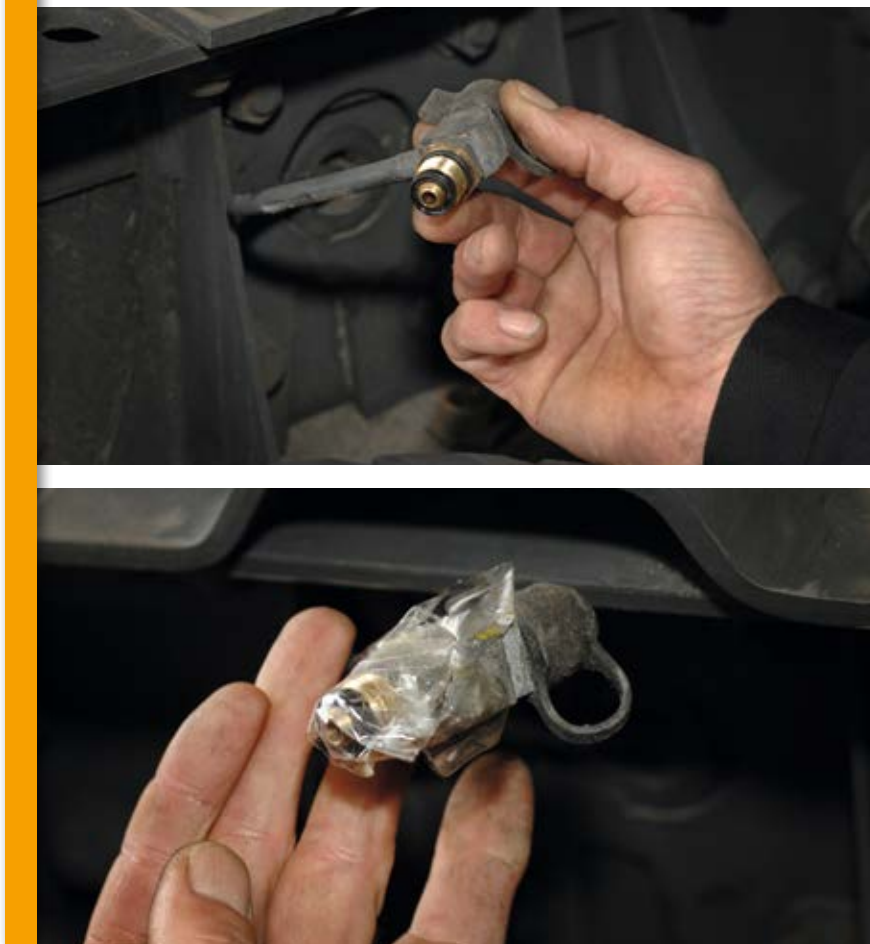
Deflate your Air Spring



- Always secure your vehicle first and make sure it remains stable during the entire process.
- Deflate your Air Spring and keep the air pressure system and the ignition completely switched off.
- Attention: The distance between chassis and ground will be reduced.

3.

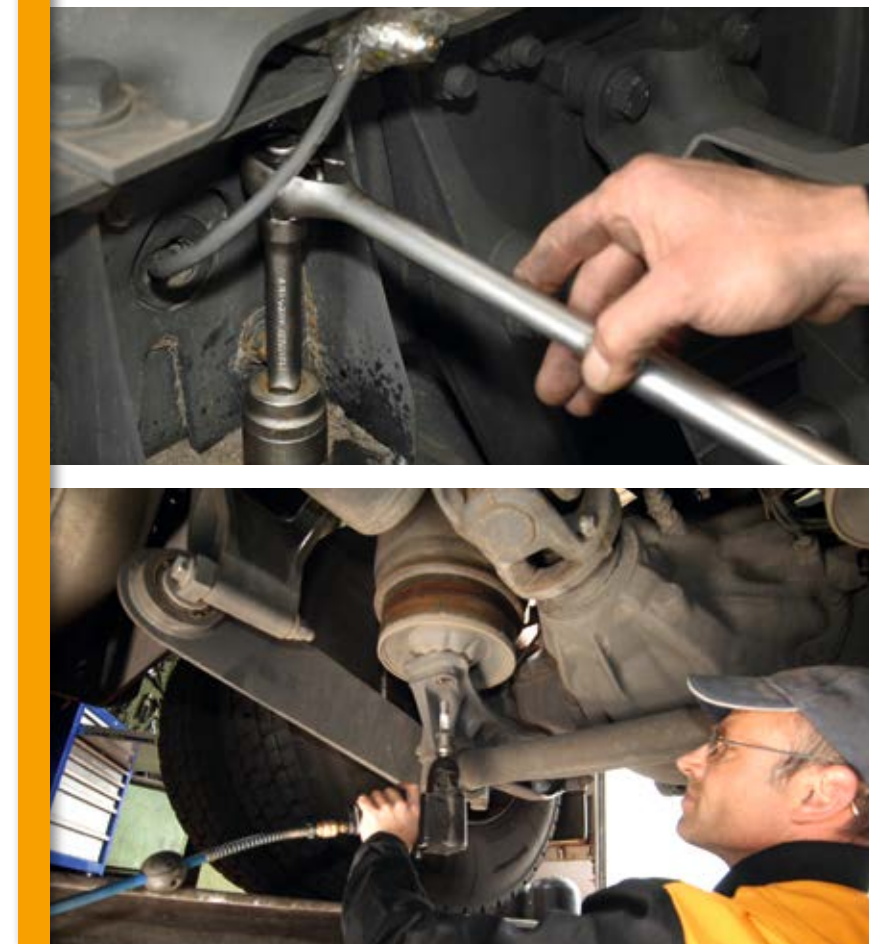
Loosen pneumatic valves



- When loosening the valve from the air inlet make sure the compressor is still switched off.
- Remove air connection and make sure both, the valve and the air pipe stay clean.

4.

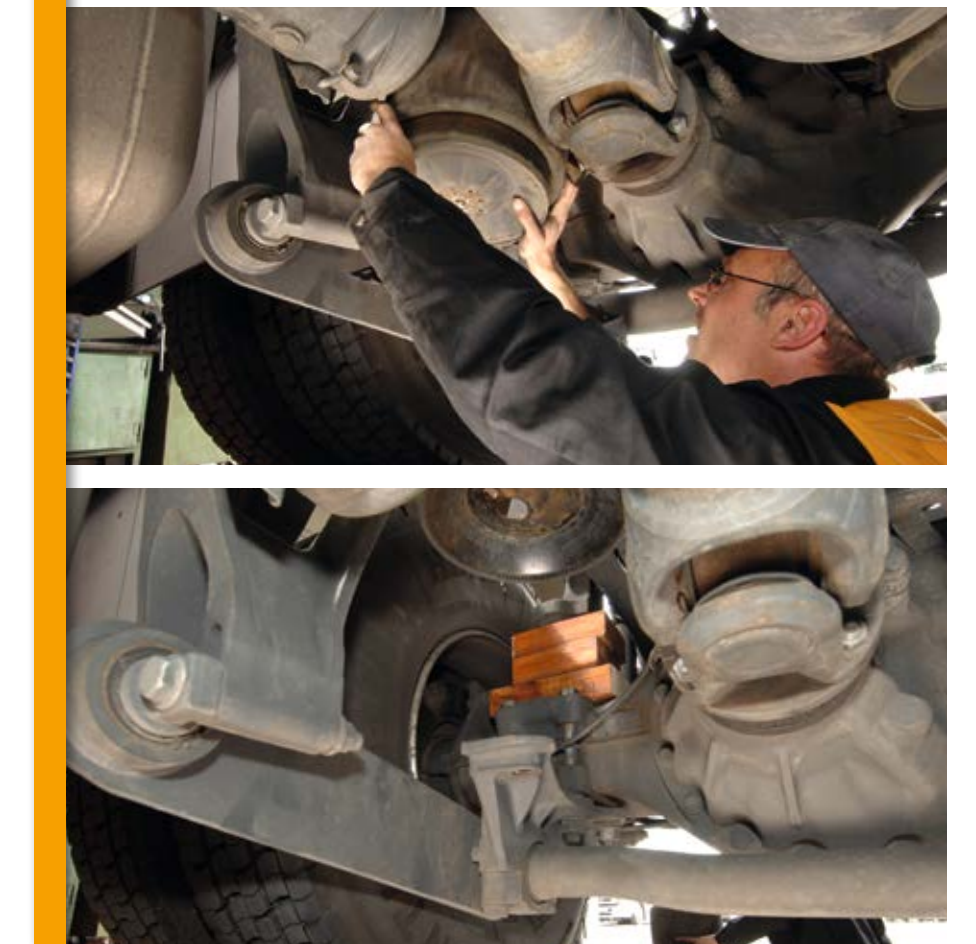
Loosen all screws



- First loosen all screws connecting the Air Spring System to the chassis.
- Then loosen all screws connecting the Air Spring System to the axle.

5.

Preparations for installment of your new ContiTech Air Spring



- Remove the defect air spring system.
- Clean the faying surface and look for corrosion.
- Keep the air pipe closed against dirt or dust at all times.

6.

Inspect all other air springs on your vehicle



- Check for abrasion, embrittlement and cracks in the rubber parts.
- Check metal parts for corrosion.
- Check plastic parts for capillary cracks.
- Check for possible contamination by lubricants such as oil, diesel, brake- or cooling fluids.
- Remove all foreign objects such as stones or dirt.
- Remove all liquids and check source of contamination.

7.

Put your new ContiTech Air Spring in place



- Install new ContiTech Air Spring System between chassis and axle and insert screws (new ones if the old ones are corroded or the threads are worn down).
- Tighten the top plate to the chassis first.
- Attention: make sure you use the correct torque which is recommended by your vehicle manufacturer or in the ContiTech catalogue.
- Leave the air inlet open.

8.

Tighten your new ContiTech Air Spring



- Pull down the piston until it touches the mounting plate (if necessary use for a compressed air gun with max. 0.3 bar).
- Compulsively comply with the height limit.
- Now tighten the piston to the axle with a torque key making sure to use the correct torque recommended by your vehicle manufacturer or in the ContiTech catalogue.

9.

Inflate your new ContiTech Air Spring System



- Connect pneumatic valve with the air inlet of the new air spring also with the recommended torque.
- Inflate your ContiTech Air Spring with the recommended working pressure, release the safety catch of your vehicle and put it back into driving position.
- Drive on the safer side with ContiTech quality.