

Subsea LMRP Hoses for Choke & Kill and Hydraulic Conduit Application

STANDARD

API Spec. 16C up to FSL 3

CONSTRUCTION

Bore type

full flow, rough bore

Liner material

H₂S resistant PA or Tauroflon™

Shape

Pre-formed hose available if necessary

Operating temperature

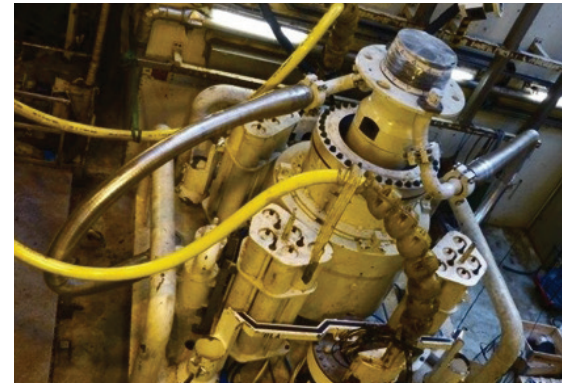
-4°F to 250°F (-20°C to 121°C)

Max. available length

60m (200 ft)

FEATURES & COMMENTS

- › Easy installation in confined spaces
Used on Lower Marine Riser Package (LMRP) at subsea BOPs
- › Extended service life as a result of reduced risk of over-bending and reduced stress on hose body and on coupling
- › Transfers less load to adjacent equipment or pipework
- › New short coupling design increases flexible length with no reduction in bonding strength



- › Opens up new design opportunities to reduce the size and weight of oil field equipment
- › Coupling materials meet NACE MR 01-75 / ISO 15156 latest edition
- › Hose length analysis is available upon request

TECHNICAL DATA

CHOKE & KILL HOSES (TAUROFLON™ LINING)

Inside Diameter		Type	Rated Working Pressure		Test Pressure		Safety Factor	Outer Diameter		MBR (storage)		MBR (operation)		Weight	
mm	in.		bar	psi	bar	psi		WP	mm	in.	m	ft.	m	ft.	kg/m
51	2.0	Standard	690	10,000	1,035	15,000	2.25	146	5.75	0.8	2.62	0.8	2.62	40	26.9
		Standard c/w st. st. wrap						151	5.94	0.8	2.62	0.8	2.62	46	30.9
		Standard	1,035	15,000	1,552	22,500	2.25	175	6.89	0.8	2.62	0.8	2.62	72	48.4
		Standard c/w st. st. wrap						181	7.13	0.8	2.62	0.8	2.62	78	52.4
		Standard	1,380	20,000	2,070	30,000	2.25	201	7.91	0.9	2.95	0.9	2.95	92.2	62
		Standard c/w st. st. wrap						207	8.15	0.9	2.95	0.9	2.95	99.8	67.1
65	2.5	Standard	690	10,000	1,035	15,000	2.25	159	6.26	0.9	2.95	0.9	2.95	46	30.9
		Standard c/w st. st. wrap						165	6.50	0.9	2.95	0.9	2.95	52	34.9
		Standard	1,035	15,000	1,552	22,500	2.25	195	7.68	0.9	2.95	0.9	2.95	81	54.5
		Standard c/w st. st. wrap						201	7.91	0.9	2.95	0.9	2.95	88	59.3
		Standard	1,380	20,000	2,070	30,000	2.25	211	8.31	1.1	3.61	1.1	3.61	99.1	66.6
		Standard c/w st. st. wrap						217	8.54	1.1	3.61	1.1	3.61	107	71.9
78	3.0	Standard	690	10,000	1,035	15,000	2.25	188	7.40	0.9	2.95	0.9	2.95	80	53.8
		Standard c/w st. st. wrap						194	7.64	0.9	2.95	0.9	2.95	87	58.5
		Standard	1,035	15,000	1,552	22,500	2.25	204	8.03	1.0	3.28	1.0	3.28	95	63.8
		Standard c/w st. st. wrap						210	8.27	1.0	3.28	1.0	3.28	102	68.5
		Standard	1,380	20,000	2,070	30,000	2.25	231	9.09	1.2	3.94	1.2	3.94	118	79.3
		Standard c/w st. st. wrap						237	9.33	1.2	3.94	1.2	3.94	126.6	85.1

Subsea LMRP Hoses for Choke & Kill and Hydraulic Conduit Application, Cont.

HYDRAULIC CONDUIT (PA, LINING)

Inside Diameter		Type	Rated Working Pressure		Test Pressure		Safety Factor	Outer Diameter		MBR (storage)		MBR (operation)		Weight	
mm	in.		bar	psi	bar	psi		WP	mm	in.	m	ft.	m	ft.	kg/m
54	2.0	Standard	345	5,000	517	7,500	2.25	142	5.6	0.8	2.6	0.8	2.6	38	26
		Standard c/w st. st. wrap						152	6.0	0.8	2.6	0.8	2.6	42	28
		Standard	690	10,000	1,035	15,000	2.25	142	5.6	0.8	2.6	0.8	2.6	38	26
		Standard c/w st. st. wrap						152	6.0	0.8	2.6	0.8	2.6	42	28
		Standard	1,035	15,000	1,552	22,500	2.25	177	7.0	1.2	3.9	1.2	3.9	69	46
		Standard c/w st. st. wrap						188	7.4	1.2	3.9	1.2	3.9	76	51
65	2.5	Standard	345	5,000	517	7,500	2.25	155	6.1	0.9	3.0	0.9	3.0	43	29
		Standard c/w st. st. wrap						167	6.6	0.9	3.0	0.9	3.0	49	33
		Standard	690	10,000	1,035	15,000	2.25	155	6.1	0.9	3.0	0.9	3.0	43	29
		Standard c/w st. st. wrap						167	6.6	0.9	3.0	0.9	3.0	49	33
		Standard	1,035	15,000	1,552	22,500	2.25	191	7.5	1.3	4.3	1.3	4.3	77	52
		Standard c/w st. st. wrap						202	8.0	1.3	4.3	1.3	4.3	85	57
78	3.0	Standard	345	5,000	517	7,500	2.25	168	6.6	0.9	3.0	0.9	3.0	49	33
		Standard c/w st. st. wrap						180	7.1	0.9	3.0	0.9	3.0	56	38
		Standard	690	10,000	1,035	15,000	2.25	168	6.6	0.9	3.0	0.9	3.0	49	33
		Standard c/w st. st. wrap						180	7.1	0.9	3.0	0.9	3.0	56	38
		Standard	1,035	15,000	1,552	22,500	2.25	208	8.2	1.4	4.6	1.4	4.6	90	61
		Standard c/w st. st. wrap						219	8.6	1.4	4.6	1.4	4.6	98	66