

## **CONTI-AIR® STEEL CE**

Coldset Metalback Printing Blanket

# CONTI-AIR® STEEL CE

## The metalback blanket developed for negative paper feeding

- › Recommended for satellite Newspaper presses
- › Soft blanket construction
- › Negative Feeding Characteristic (within CA MBB Range)
- › Developed for highest durability
- › Excellent ink laydown behavior
- › Using the special CONTI-AIR® microcell technology

### Guiding Value

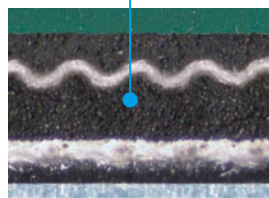
		Standard
<b>Color:</b>	green	
<b>Surface:</b>	ground	
<b>Hardness of face compound:</b>	approx. 54 Shore A	DIN ISO 48-4*/**
<b>Thickness:</b>	according to OEM drawing	DIN EN ISO 2286-3*
<b>Metal base:</b>	stainless steel	
<b>Backside:</b>	calibrated film	

\* Average value obtained in accordance with the given standard. Please note that the number of samples tested may differ

\*\* The specified hardness of the cover compound can only be measured using test samples according to the standard. It is not possible to measure the hardness directly on the product itself.

Unsere Drucktücher verfügen über eine spezielle CONTI-AIR® kompressible Schicht geschlossener Mikrozellen mit Überdruck.

Our printing blankets have a special CONTI-AIR® compressible layer of over pressured microcells.



**ContiTech Elastomer-Beschichtungen GmbH**  
Breslauer Str. 14 | 37154 Northeim | Germany  
service@contiair.com  
<https://www.continental-industry.com/conti-air>

The content of this publication is not legally binding and is provided as information only. The trademarks displayed in this publication are the property of Continental AG and/or its affiliates. Copyright © 2025 ContiTech AG, Hanover. All rights reserved. For complete information go to: [www.continental-industry.com/disc1\\_en](http://www.continental-industry.com/disc1_en)  
Der Inhalt dieser Druckschrift ist unverbindlich und dient ausschließlich Informationszwecken. Für weitere Information besuchen Sie bitte: [www.continental-industry.com/disc1\\_de](http://www.continental-industry.com/disc1_de)