

Attractive Exterior



Table of Contents

At a glance: skai [®] outdoor film in use	04
Perfect finish for windows	06
Colour and design for doors	08
More than just façades	10
Standard heat-free	12
Top position in the market	14
The window of the future	16
Excellent design and colour variety	18
The whole world of skai [®] outdoor films	20

Construction Elements in best Form



When the vinyl window made its triumphant debut more than 30 years ago, it was only available in one colour: white. Today, builders, architects, and planners can choose from a multitude of colours, embossings, and designs for window profiles, door leaves, garage doors, and façade elements. Coating with weather-resistant film makes this possible, which not only beautifies the construction element, but also protects it over the long term. As a surface specialist and innovation leader, we at Hornschuch have played a big role with our **skai**® outdoor film in the increasing acceptance of the use of films. For more than 20 years, we have stood for ground-breaking problem solutions in outdoor applications. In close dialogue with the technology and development department of the customer, we precisely tailor the films to the needs of the

market. Years ago, we introduced the patented **skai**® **cool colors** technology – still the standard. Our extensive warranties increase the trust in the performance of the outdoor film. As a result, more than 30 percent of the window profiles in Germany are now covered in film. In other countries, the percentage of film coated surfaces is comparable, with an increasing tendency. We also utilize our expertise in leading expert committees such as the RAL Gütegemeinschaft (RAL Quality Assurance Association, Germany) and American Architectural Manufacturers Association (AAMA). We are active in the expert workgroup and participate in the drafting of future quality guidelines. But in addition to technical know-how, we also lead in design: our innovations set trends for the branch.

At a Glance: *skai*® Outdoor Film in Use



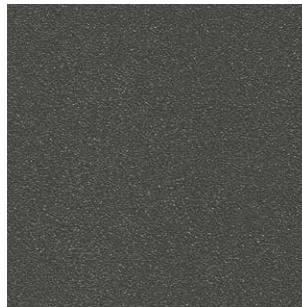


Perfect Finish for Windows



When designing vinyl windows, window profile film is practically unbeatable. Film coated profiles have established themselves with leading German and European system providers. Convinced of the many advantages of the film, they have expanded their manufacturing techniques to include profile wrapping. Since the early years of the film at the beginning of the 1990's, the film coating of PVC-profiles is an economical, long-term solution and is also sustainable thanks to the recyclability. Innovations and an ever-expanding warranty contributed to this, as well as the guidance, coordination, and mediation by the RAL Gütegemeinschaft (RAL Quality Assurance Association). Above all, however, the market and the final consumers recognized the opportunities and possibilities that window profile film offers. In addition to the variety of colours and designs, which did not exist in vinyl windows before the film, our

skai® products are impressive due to their longevity and ease of cleaning. An additional advantage is the homogeneity of the surface, regardless of the construction element the film is used on. When the builder decides on a design, the windows perfectly match the house door and the garage door – everything looks flawless.



F4361014
Alux DB 703



F4367003
anthrazitgrau SFTN



Color and Design for Doors





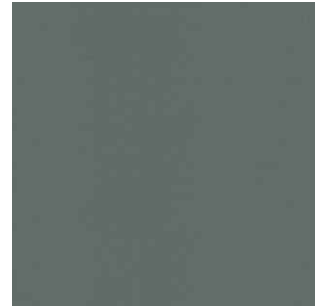
www.skai-konfigurator.com

Windows, doors, and garage doors have a major impact on the overall appearance of a building. In order to ensure a homogenous look with different construction elements, the advantage of film coating must also extend to other components, in addition to windows. For this reason, we also offer the appropriate outdoor films for entrance doors and garage doors. For example, a colour or a design can be utilized for various construction elements in a homogeneous way. Almost all of the designs are part of our **skai**® collection that is available from stock, including a large selection of plain colors, wood designs, Metbrush, and Alux, as well as the designs of our new Mattline. Our variety of designs is reflected by the market, where we are a trendsetter. With a

comprehensive planning tool, the **skai**® configurator, we show the “what if” online and bring the whole spectrum of possibilities with **skai**® outdoor film in all applications to life with the click of a mouse button.



F4363051
Teak terra



F4366048
basaltgrau SFTN matt



More than just Façades



F4363042
Noce Sorrento balsamico



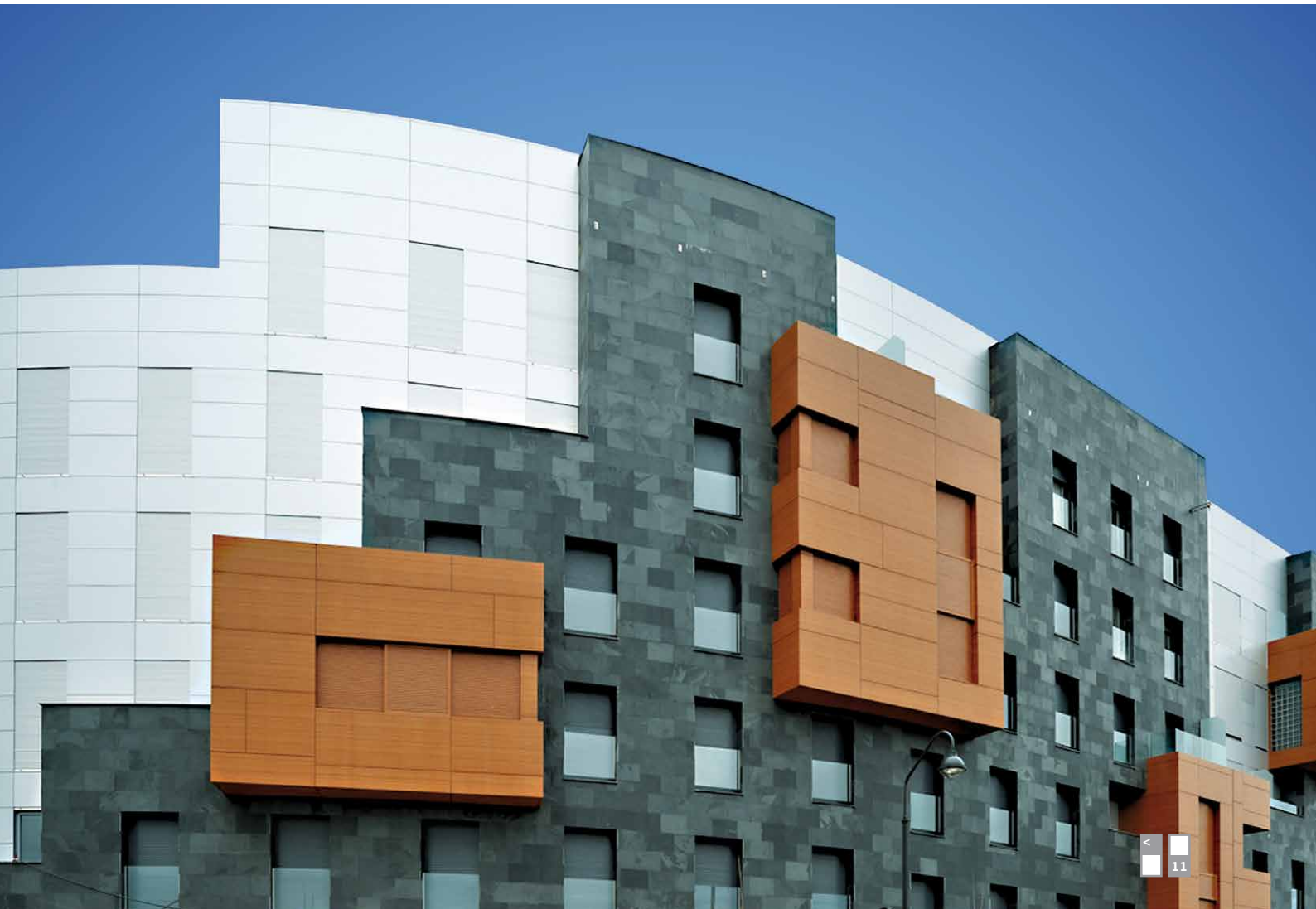
F4363043
Cherry amaretto

In addition to the use on windows, house doors, and garage doors, outdoor films are also increasingly demonstrating their advantages on additional construction elements. If they are used on curtain walls, they brave wind and weather there, are maintenance-free, and ensure higher durability. As with window profiles the same variety of designs and colours can be selected from for façade elements as well. For example, a very natural look can be achieved with a wood design. Or a technical appearance can be achieved with metal designs, which look like powder coated aluminium or brushed steel. If desired, a design can be precisely

coordinated with the various elements, resulting in a thoroughly homogenous design of the entire building.



F4363064
Walnuss curcuma



Standard heat-free



Dark surfaces heat up more than light surfaces in the sun. A fact that plays a role for vinyl window profiles, especially in southern countries. The more heat is transferred to the profile system, the more unstable it becomes. And the darker the colour, the greater is the risk of damage to the window in hot regions. But because the market also demands dark colors and designs, we developed the **skai[®] cool colors** technology. This innovation ensures that the window heats up noticeably less. Special pigments reduce the thermal effect of the near infrared radiation of the sun. Thanks to the patented **skai[®] cool colors** technology, the predominant share of this radiation does not penetrate into the profile, but is reflected by the surface. The penetration of heat into the profile is clearly lower, the surface remains "cool" and the form of the window remains stable. Thus, **skai[®] cool colors** extends the life of the window. Now, we equip about 80 colors and designs with cool colors technology. The original, which premiered in 2006,

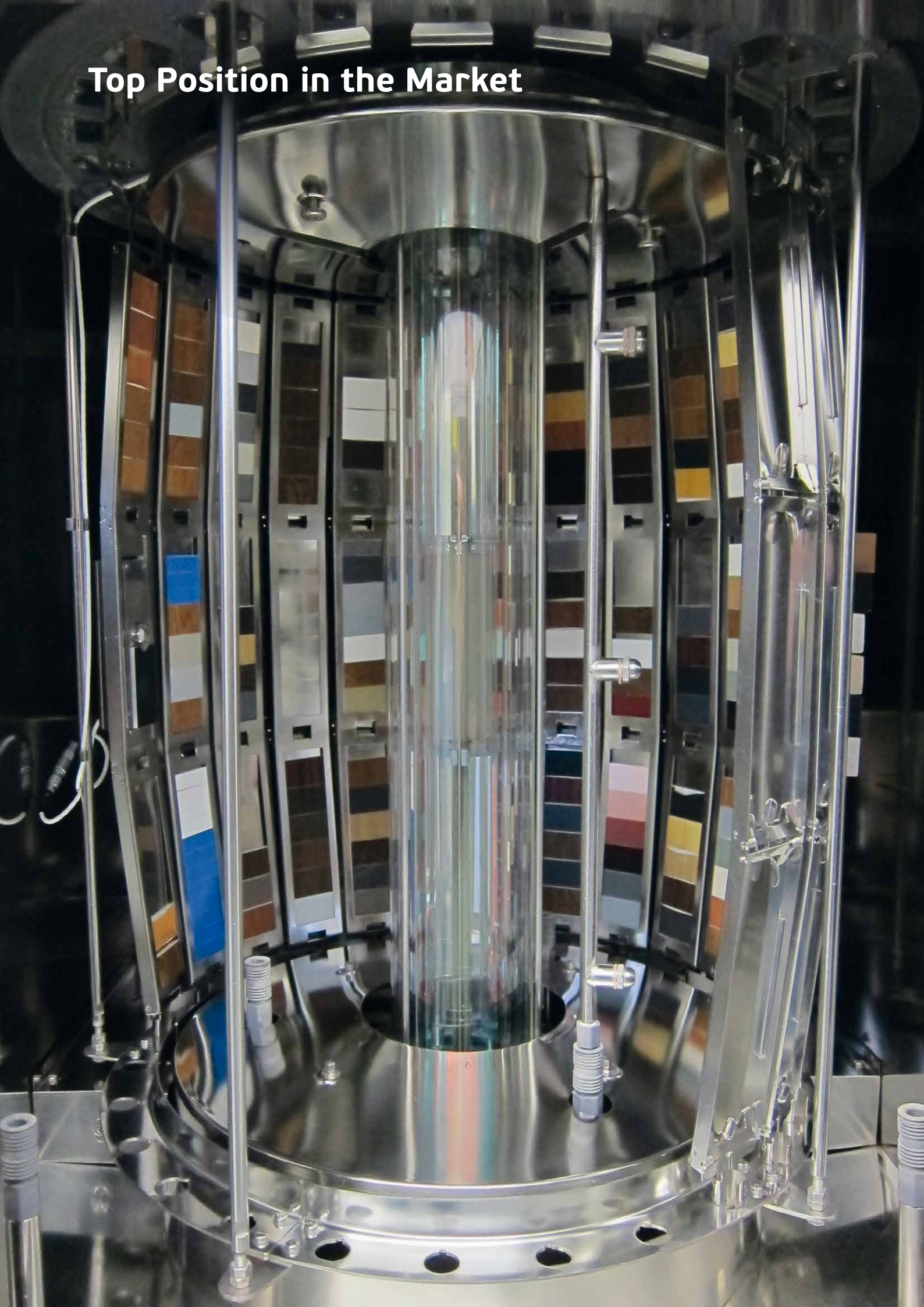
is still the standard and has spawned numerous copycats. A further development is **skai[®] cool colors plus**, which is additionally equipped with a white base layer and thus is even more effective. In this way, a dark base is completely neutralized. Therefore, it is especially suited for extreme climate conditions.



F4365021
tannengrün



Top Position in the Market



There are many good reasons that we have a leading position in the market with regard to quality. One of these is: we often do more than necessary. For example, all films are subjected to a time-lapse weather simulation in comprehensive tests in our own weathering centre. The latest generation of outdoor films are rated around 50 percent higher than earlier film types with regard to weather performance. A total of eight xenon test devices are available in our own weathering centre in Weissbach. Here, up to 1,700 samples can be weathered at the same time. Worldwide, we also conduct outdoor weathering at four sites – in Southern France, Florida, Arizona, and Australia. We regularly present the latest state of technology at the leading specialized trade fairs at home and abroad. We visit the most important conventions and conferences

and participate in expert work groups within the contexts of the RAL Gütegemeinschaft (RAL Quality Assurance Association) that deal with the technical development of the film coating of tomorrow.



The Window of the Future

Together with the RAL Gütegemeinschaft and in close cooperation with our customers, we constantly develop the characteristics of our **skai**[®] window profile film further and thereby make a major contribution to the design of the window of the future. With the new RAL quality and test provisions, a new level of quality is achieved, as 10,000 hours of minimum weathering time are now prescribed. We already voluntarily weather the films 15,000 hours. This corresponds to a period of almost 20 years in a central European climate. As the developer of **skai**[®] **cool colors** technology, which achieves impressive results, we are a forerunner in the area of heat reduction. Thus, we ensured that this topic was additionally included in the RAL list of criteria. We will also be active within the RAL Gütegemeinschaft in the future and develop the configuration of the quality guidelines further, in order to permanently give the overall topic of film lamination stability and sustainability. We pursue a holistic approach with the window of the future and are therefore in close contact and regular exchange with manufacturers of adhesives/ primers, machines, protective films, and touch-up pens. In order to make a statement, we have increased the warranty up to 10 years Europe-wide and to 5 years worldwide. In practical application, the actual useful life of the film coating already corresponds to that of the window itself.

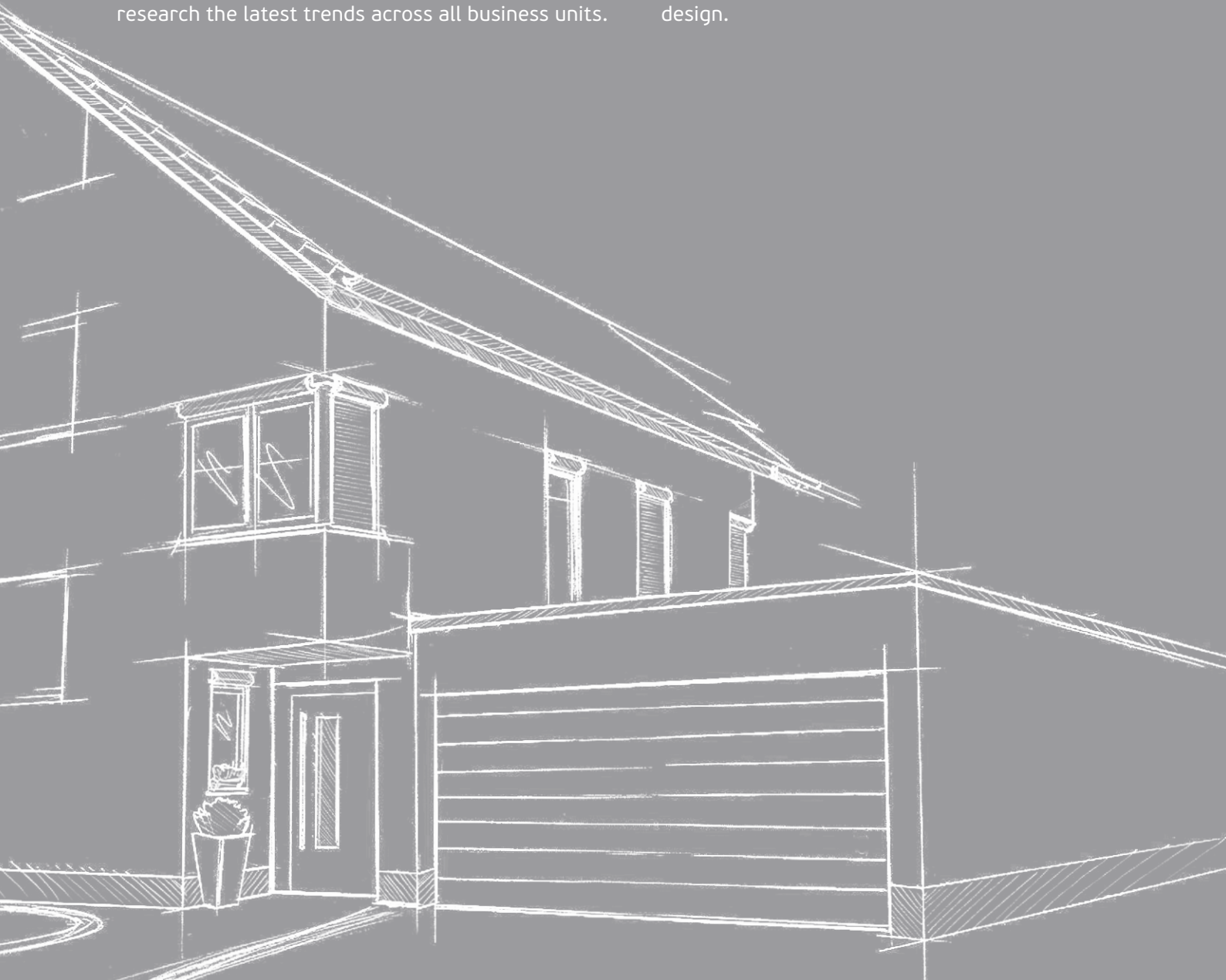


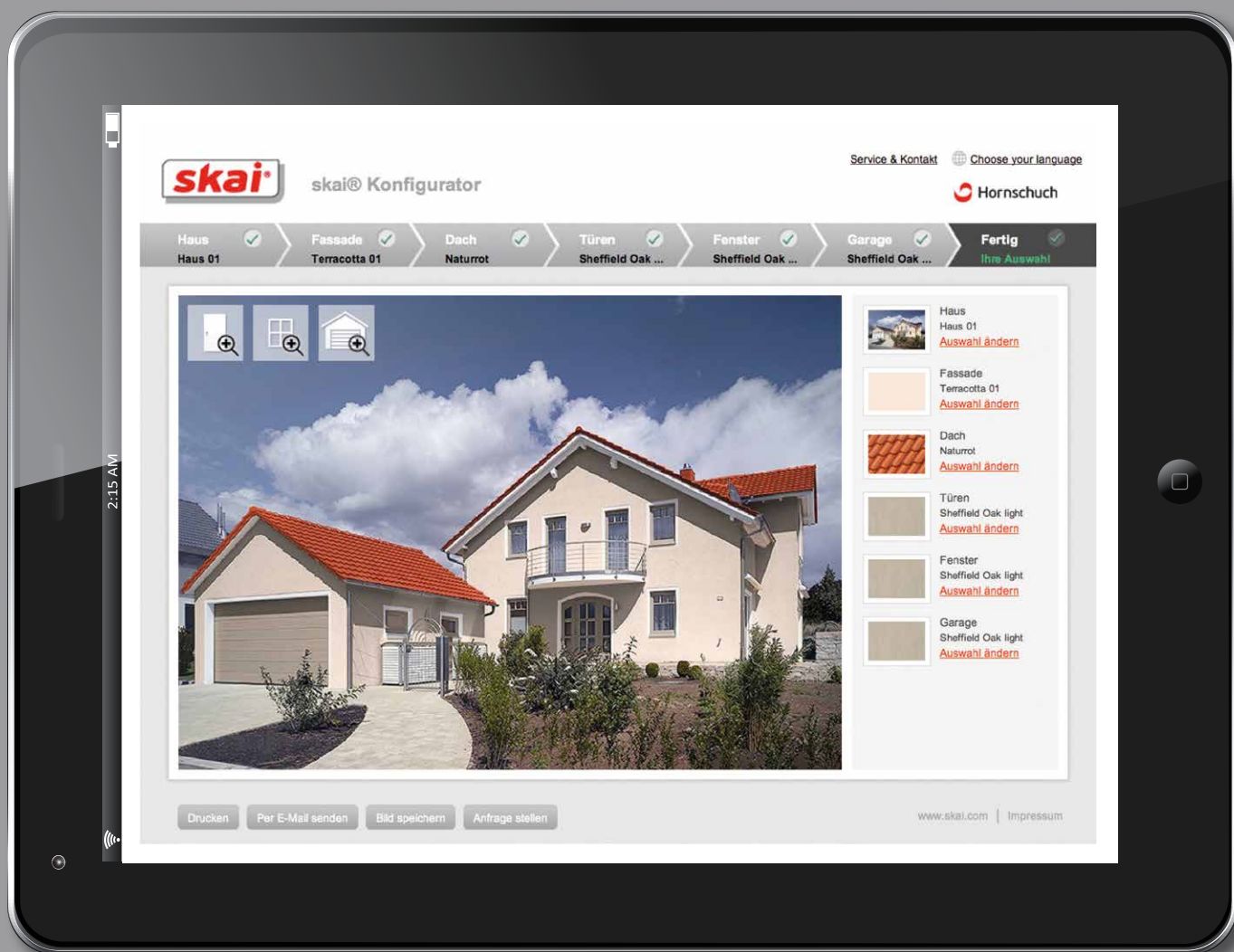


Excellent Design and Color Variety

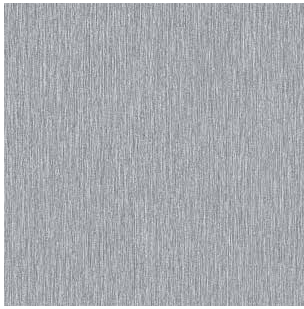
As a surface specialist, our goal is to create accents in the design and the outer appearance of the building. In the design aspects of colour, design, and embossing, we create a multitude of possibilities for this. In the Hornschuch Design Center that was founded in 2011 in Weissbach, 16 designers research the latest trends across all business units.

Impulses from other **skai**[®] business units act as the model for innovations in the area of outdoor film in the form of new designs and embossings. A series of international awards, i. e. the red dot, iF design award, Interzum Award and German Design Award give proof of the excellent performance in surface design.

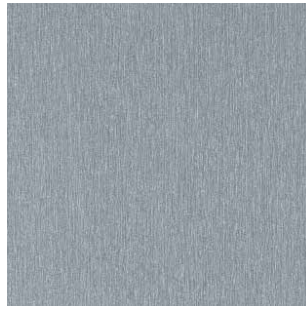




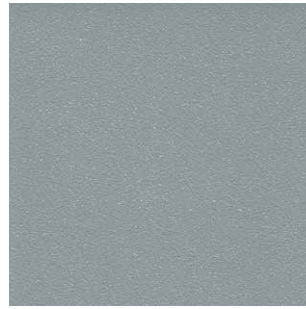
The whole World of *skai*[®] Outdoor films



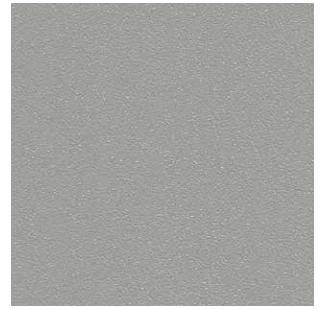
F4361001
Metbrush aluminium



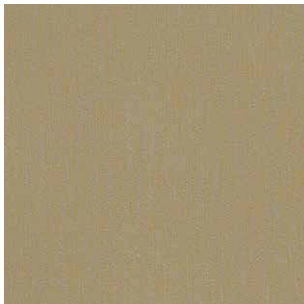
F4361002
Metbrush silver



F4361013
Alux silbergrau



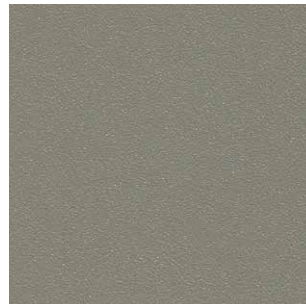
F4361015
Alux weissaluminium



F4361007
Metbrush messing



F4361004
Metbrush platin



F4361017
Alux steingrau



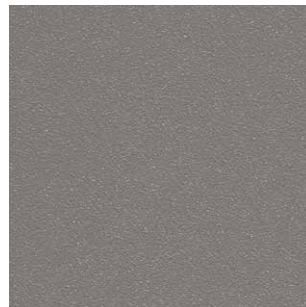
F4563081
Sheffield Oak light



F4361009
Metbrush mocca



F4361010
Metbrush schoko



F4361016
Alux graualuminium



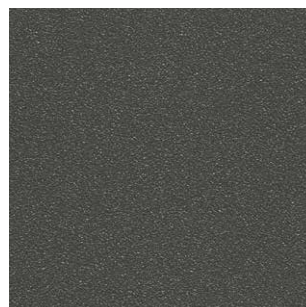
F4361011
Metallic wood mocca



F4361005
Metbrush quarzgrau



F4361006
Metbrush anthrazitgrau



F4361014
Alux DB 703



F4363086
Sheffield Oak grey



F4363054
Teak silver grey



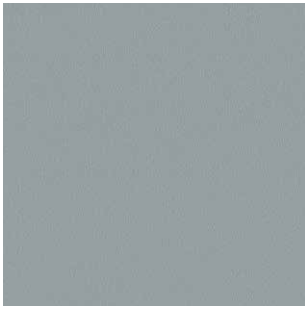
F4364003
anthrazitgrau Stylo



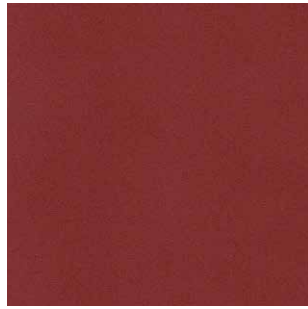
F4361012
Alux anthrazit



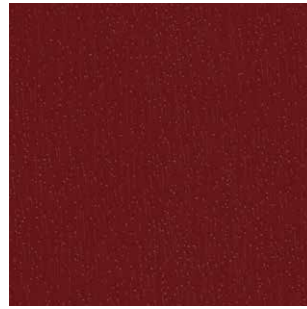
F4363087
Sheffield Oak brown



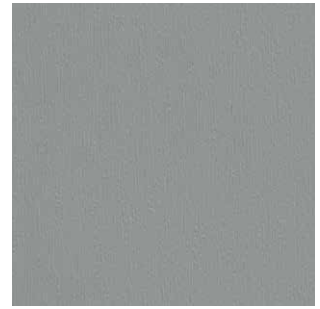
F4367049
titanium SFTN



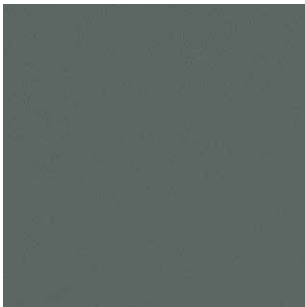
F4366013
rubinrot SFTN matt



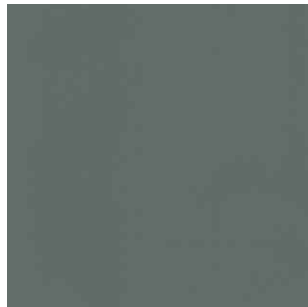
F4365013
rubinrot



F4365049
silbergrau



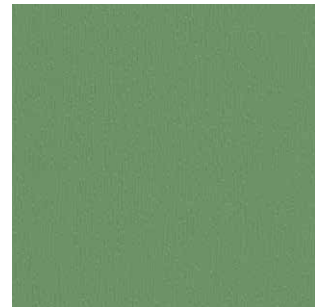
F4367048
basaltgrau SFTN



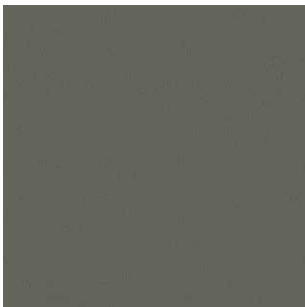
F4366048
basaltgrau SFTN matt



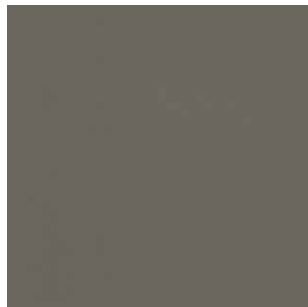
F4365006
stahlblau



F4365020
pastellgrün



F4367047
quarzgrau SFTN



F4366047
quarzgrau SFTN matt



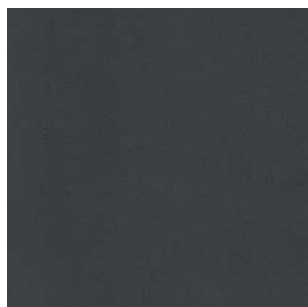
F4366021
tannengrün SFTN matt



F4365021
tannengrün



F4367003
anthrazitgrau SFTN



F4366003
anthrazitgrau SFTN matt



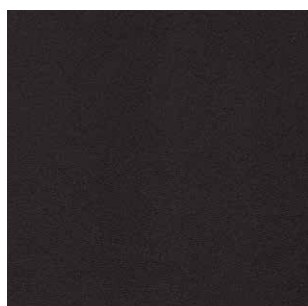
F4366023
schwarzgrau SFTN matt



F4365003
anthrazitgrau



F4367023
schwarzgrau SFTN



F4366010
schwarzbraun SFTN matt



F4366055
S bronze SFTN matt



F4365010
schwarzbraun



F4565053
altweiss



F4565001
cremeweiss



F4566001
cremeweiss SFTN matt



F4565057
brillantweiss



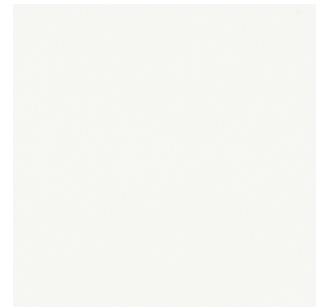
F4565015
beige



F4565054
creme



F4566015
beige SFTN matt



F4567030
verkehrsweiss SFTN



F4565058
papyrusweiss



F4565056
hellelfenbein



F4366039
Silicia SFTN matt



F4363031
Birke rosé



F4363064
Walnuss curcuma



F4363062
Walnuss kolonial



F4363058
Walnuss amaretto



F4363077
Newcastle Oak khaki



F4363078
Asteiche natur



F4363063
Walnuss rehbraun



F4363059
Walnuss terra



F4363052
Teak arte



F4363051
Teak terra



F4363043
Cherry amaretto



F4363041
Noce Sorrento natur



F4362009
Oregon Pine natur



F4363042
Noce Sorrento balsamico



F4363083
Santana Oak rotbraun



F4362036
Staufereiche Kolonial



F4362048
Staufereiche mocca



F4362012
Colmar Eiche sepia



F4362035
Staufereiche terra



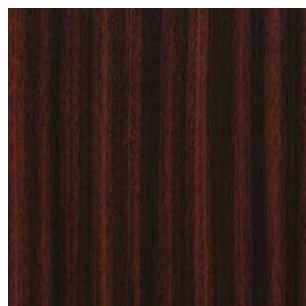
F4362007
Montana Eiche tabak



F4362060
Sipo



F4362001
Macoree



F4362002
Sapeli



F4362032
Kirsche Piemont

Members of the
HornschuchGroup



Hornschuch

Konrad Hornschuch AG
Salinenstrasse 1
74679 Weissbach
GERMANY
Phone +49 7947 81-540
Fax +49 7947 81-557
exterior@hornschuch.de
www.skai.com
www.hornschuch.com

skai® is a trademark
of Konrad Hornschuch AG



Hornschuch

STOLZENAU
Hornschuch Stolzenau GmbH
Grosse Brinkstrasse 12
31592 Stolzenau
GERMANY
Phone +49 5761 930-0
Fax +49 5761 930-401
info@hornschuch-stolzenau.de
www.hornschuch-stolzenau.de



kek-Kaschierungen GmbH
Birkenwaldstrasse 1
79336 Herbolzheim
GERMANY
Phone +49 7643 807-0
Fax +49 7643 807-10
info@kek-kaschierungen.de
www.kek-kaschierungen.de

O'Sullivan® FILMS

O'Sullivan FILMS Inc.
1944 Valley Avenue
Winchester, Virginia 22601
USA
Phone +1-800-336-9882
Fax +1-540-722-2695
info@osul.com
www.osul.com

We accept responsibility. Not just for content and design, but also for the manufacturing of this printed project. CO₂-emissions, which cannot be avoided during printing over the short term, are balanced out by various climate protection projects – a small contribution to a better climate. Furthermore, we work together exclusively with printers that are FSC and PEFC-certified. The certification guarantees that the paper for this printed project comes from socially, economically, and ecologically sustainable forests.

K392-4401



4 007386 948458